

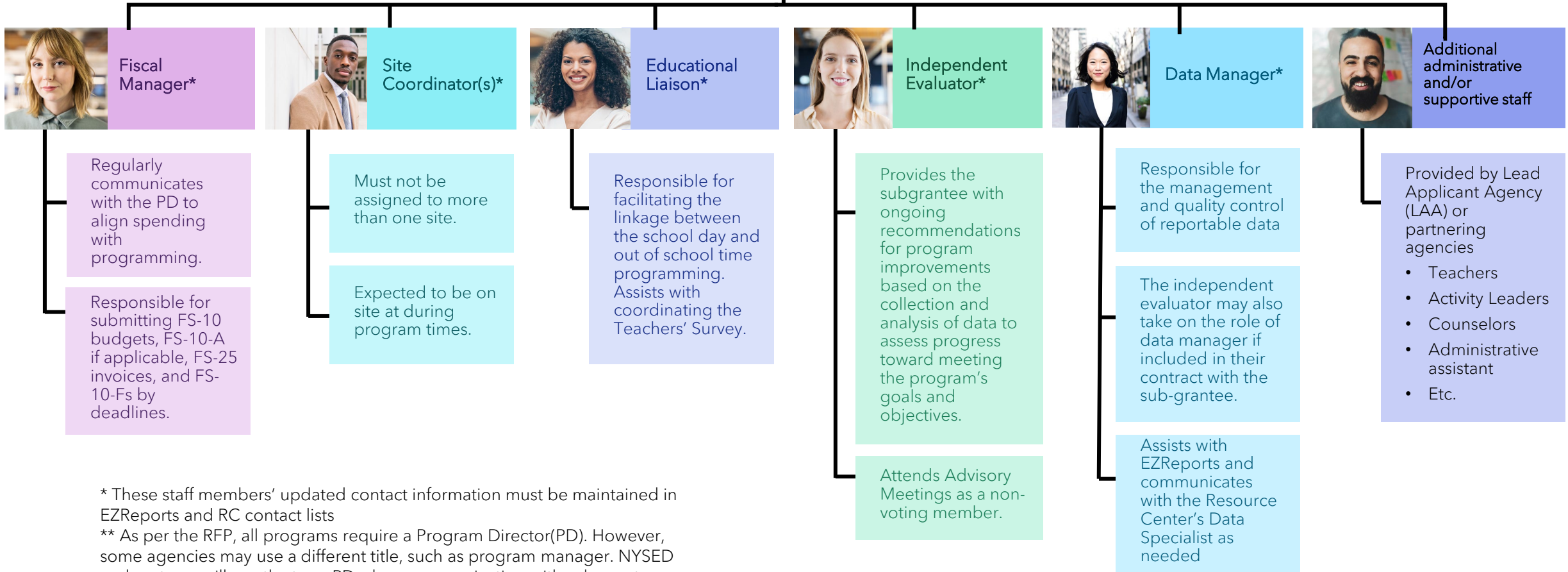
Who's Who in 21stCCLC?

Organization chart



Program Director (PD)*, **

- Has ultimate responsibility for all aspects of the subgrant
- Recommended that the PD be full-time especially for grants over \$750K
- One PD may not oversee more than two subgrants of any size
- May act in dual capacity of PD and Site Coordinator if necessary for single site subgrants



* These staff members' updated contact information must be maintained in EZReports and RC contact lists
 ** As per the RFP, all programs require a Program Director(PD). However, some agencies may use a different title, such as program manager. NYSED and partners will use the term PD when communicating with sub grantees. This is the role they are referring to.