

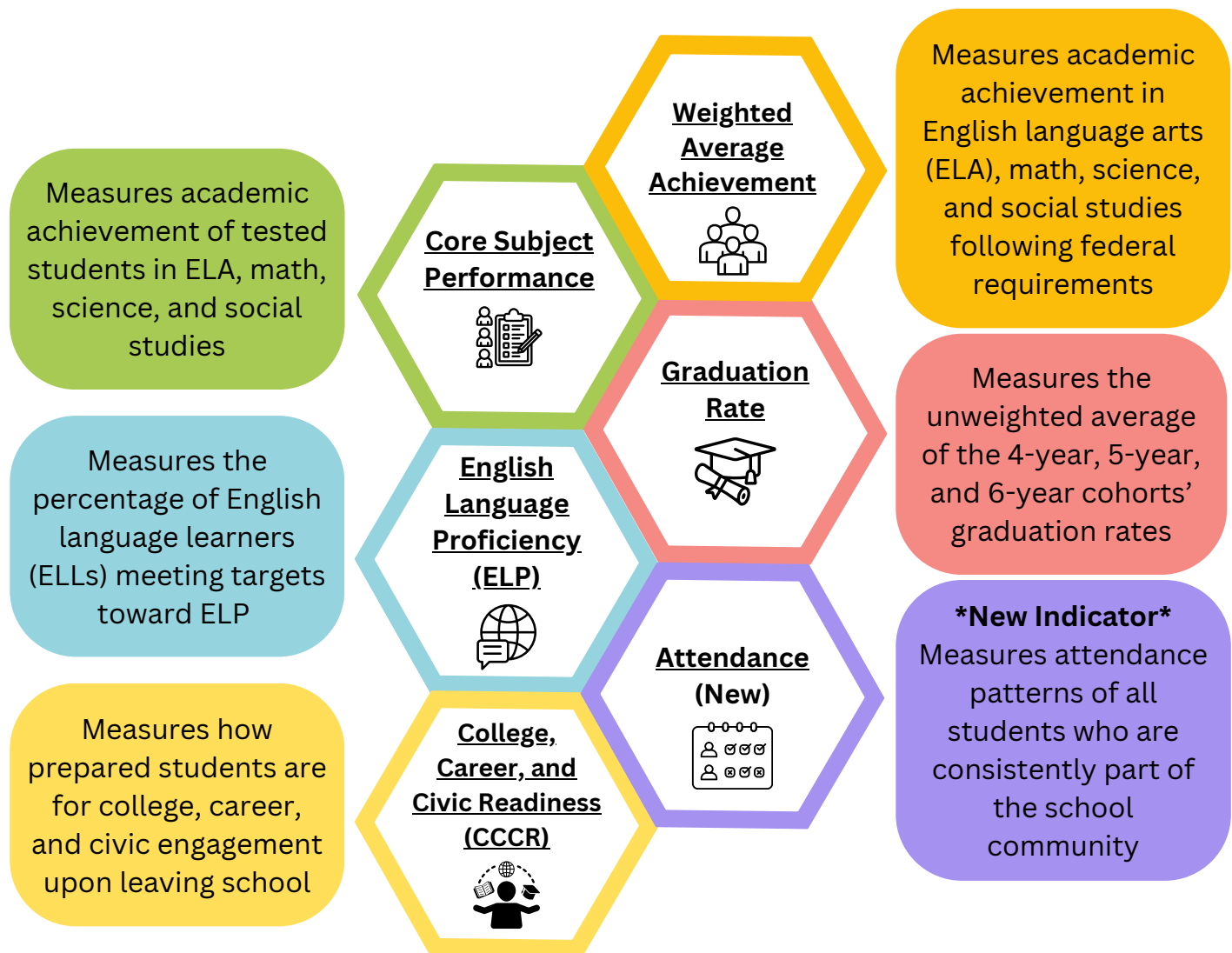
Reimagine Phase Overview

2025–2026 School Year and Beyond

High School Level

Accountability Indicators

Click on each indicator for more information about how it is calculated!



Minimum N-Size

A single year of student records is used to calculate the accountability levels for each indicator.

For each accountability subgroup, a minimum n-size of 20 student records is required to calculate the accountability indicators.

Identification and Exit Criteria

Support Models

Support models for subgroups, schools, and districts are differentiated through a scaffolded continuum.

SCHOOLS & SUBGROUPS

DISTRICTS

Comprehensive Support and Improvement (CSI)

Additional Targeted Support and Improvement (ATSI)

Targeted Support and Improvement (TSI)

Local Support and Improvement (LSI)

Target District

IDENTIFIED EVERY THREE YEARS
(i.e., 2025-2026, 2028-2029 SYs)

IDENTIFIED ANNUALLY
(i.e., 2025-2026, 2026-2027, 2027-2028 SYs)

Identification Criteria

For more details, please see the [Identification and Exit Criteria fact sheet](#).

CSI Identification

- All Students groups that meet one of the scenarios that identify a minimum of 5% of the lowest performing Title I schools
- The All Students group has a 4-year Graduation Rate lower than 67% and 5- and 6-year Graduation Rates not at or above 67%.
- Subgroups identified for ATSI that meet the identification criteria for CSI

ATSI Identification

- Subgroups identified for TSI that meet the identification criteria for CSI

TSI Identification

- Subgroups that meet TSI identification for three consecutive years
- Subgroups that meet TSI identification for first or second consecutive year will be identified for Potential TSI (PTSI).

Target District Identification

- Districts with any component school identified for CSI, ATSI, or TSI

LSI Identification

- Subgroups not identified for ATSI, TSI, or PTSI
- Schools not identified for CSI, ATSI, or TSI
- Districts not identified for Target District

Exit Criteria

Subgroups, schools, and districts can exit their support models and be identified for LSI in the **second SY after initial identification or any SY thereafter.**

Subgroups and schools identified for CSI or ATSI must have one academic achievement indicator or unweighted average 4-, 5-, and 6-year Graduation Rate **higher than at the time of identification** (and a 4-, 5-, or 6-year Graduation Rate $\geq 67\%$ if identified for CSI for low Graduation Rate).

Target Districts with **no component schools** identified for CSI, ATSI, or TSI are identified for LSI.

Want to know more?

For more tools and resources about the New York State ESSA Accountability System, visit the NYSED School and District Accountability Resources and Data website.

To learn more about resources and supports for identified schools and districts, visit the NYSED Office of Accountability's Continuous Improvement website.



<https://www.nysed.gov/accountability/school-and-district-accountability-resources-and-data>



<https://www.nysed.gov/accountability/continuous-improvement>